

## MORE WAYS TO GET INVOLVED

### REPORT HAZARDOUS NESTS

Hazardous nests are built with human-made materials, especially when they hang near energized power lines. They can cause electrocution, fires, and outages. If you see one, report it to your power company immediately.

### OSPREY WATCH

Osprey Watch is a global community science project tracking osprey nesting success. Volunteers observe and report nest activity, contributing data used by researchers and land managers worldwide.

Learn more and sign up by scanning the QR Code :



### INSTALL A NESTING PLATFORM

Nesting platforms give osprey a safe place to raise their young, helping them avoid electrocution and reducing power outages. Their presence also provides natural pest control, benefiting both wildlife and people.

### CONNECTWILD

Watch Central Oregon's osprey nests live! See parents feed chicks, witness first flights, and learn about the challenges these birds face.

Learn more and support by scanning the QR Code :



## CONTACT

Report hazardous nests or entangled birds on power poles to the power company:

#### Pacific Power:

##### Elise Jackson

Associate Environmental Analyst

541-408-1549

[elise.jackson@pacificorp.com](mailto:elise.jackson@pacificorp.com)

#### Central Electric Cooperative (CEC):

541-548-2144

#### Found injured or orphaned wildlife?



(541) 241-8680



[www.thinkwildco.org](http://www.thinkwildco.org)



[info@thinkwildco.org](mailto:info@thinkwildco.org)

#### Want to install a nesting platform?

Contact Think Wild's Wildlife Services program:

[wildlifeservices@thinkwildco.org](mailto:wildlifeservices@thinkwildco.org)



# THINK WILD



© David Willingham



© David Willingham

## OSPREY ENTANGLEMENT



EAST CASCADES  
BIRD ALLIANCE



# ABOUT OSPREY

- Osprey are birds of prey whose diets are made up of about 99% fish.
- They are found near rivers, lakes, reservoirs, and coastal areas, where they build large nests on tree snags and manmade structures such as power poles and nesting platforms.
- Osprey are migratory and nest in Central Oregon from March to September. They spend the rest of the year in warmer southern ranges.
- Because of their dependence on clean water and fish populations, osprey are excellent indicators of aquatic health. Known as sentinel species, changes in their nesting success can signal broader ecological problems.
- Osprey were once nearly wiped out by DDT contamination in the mid-20th century but recovered after the pesticide was banned.



© David Willingham

An osprey gathering nesting material

# ENTANGLEMENT

Osprey will use baling twine, plastic bags, fishing line, garden and sports netting, and other human trash as nesting material. These are common sources of entanglement for osprey and other birds, especially when left in fields, on fence lines, or near water sources.

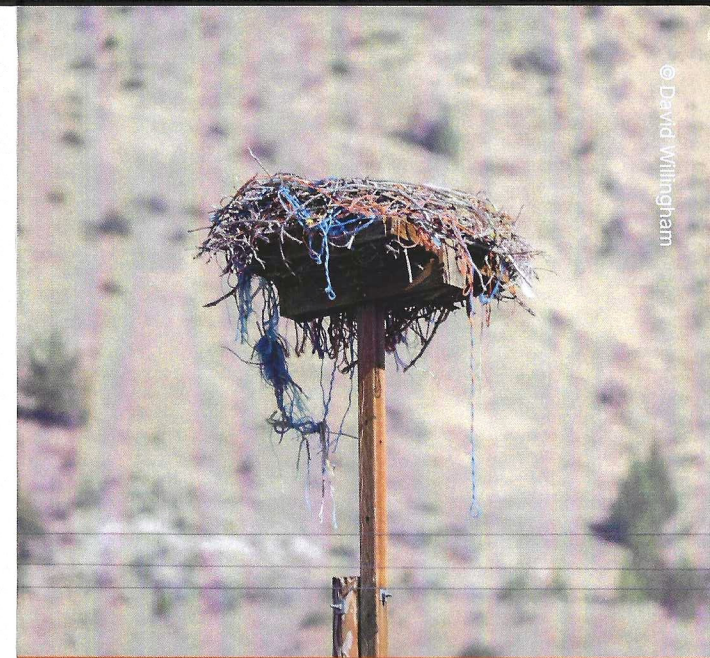
## You can help prevent entanglement:

- Collect and properly dispose of used or broken twine, fishing gear, and other plastic waste
- Recycle bale twine when possible. Many local agricultural supply centers offer take-back programs
- Remove netting from gardens, playgrounds, and sports fields when not in use.
- Spread the word!



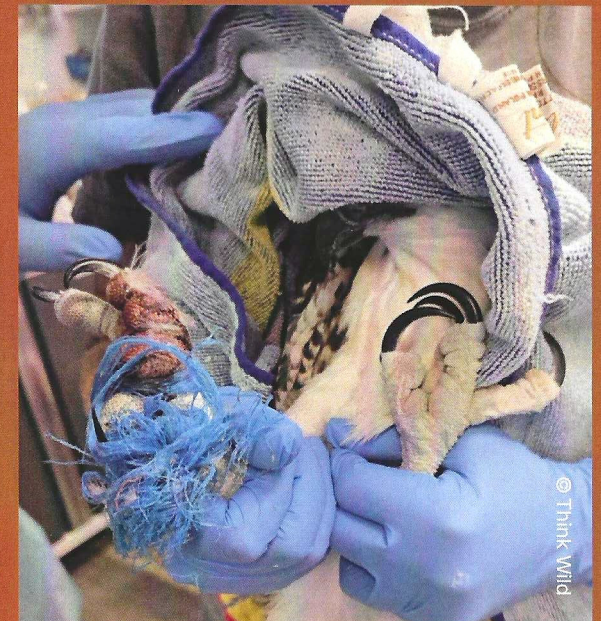
© Gary Lauder

An occupied nest with entanglement hazards



© David Willingham

IN SOME AREAS BALING TWINE KILLS  
10% OF OSPREY CHICKS (ODFW)



© Think Wild

An osprey fledgling with twine wrapped around their leg, causing nerve damage, a dislocated toe, and a missing talon.